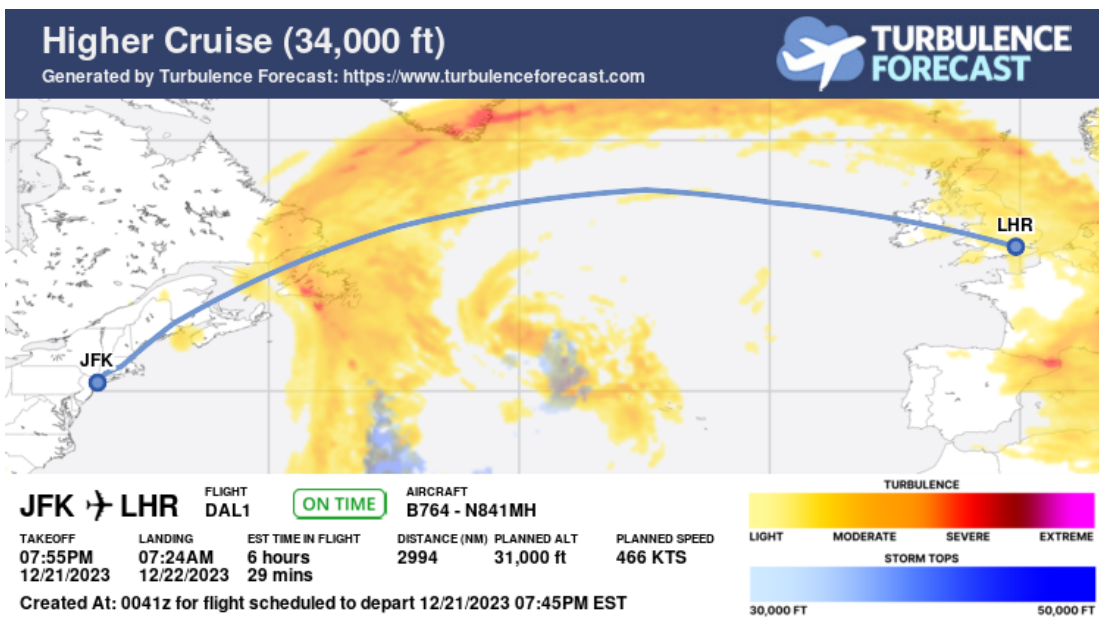
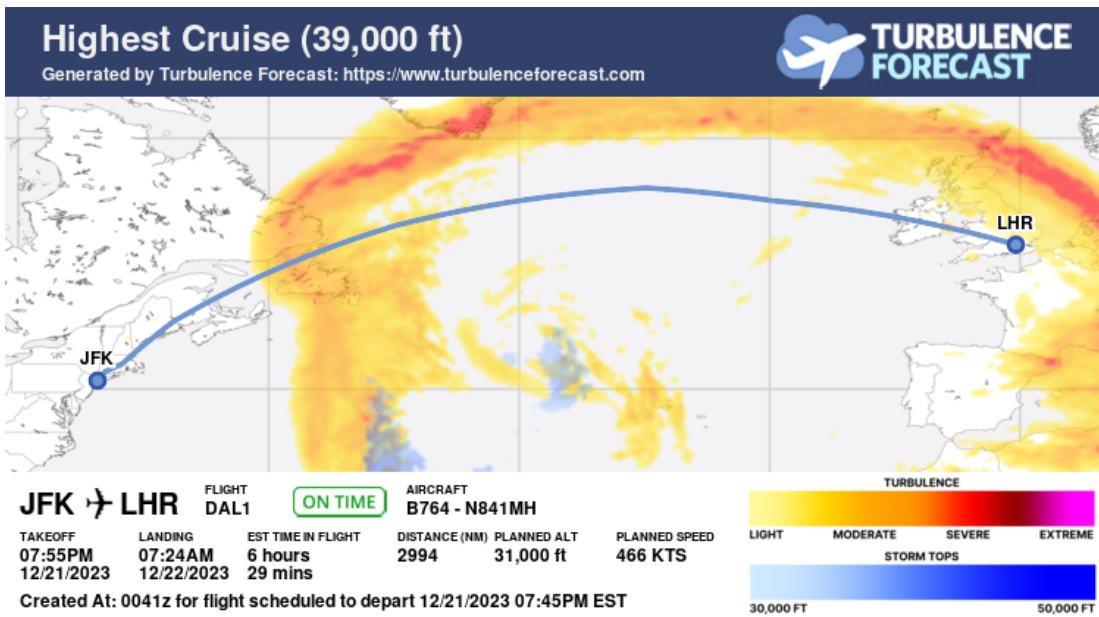
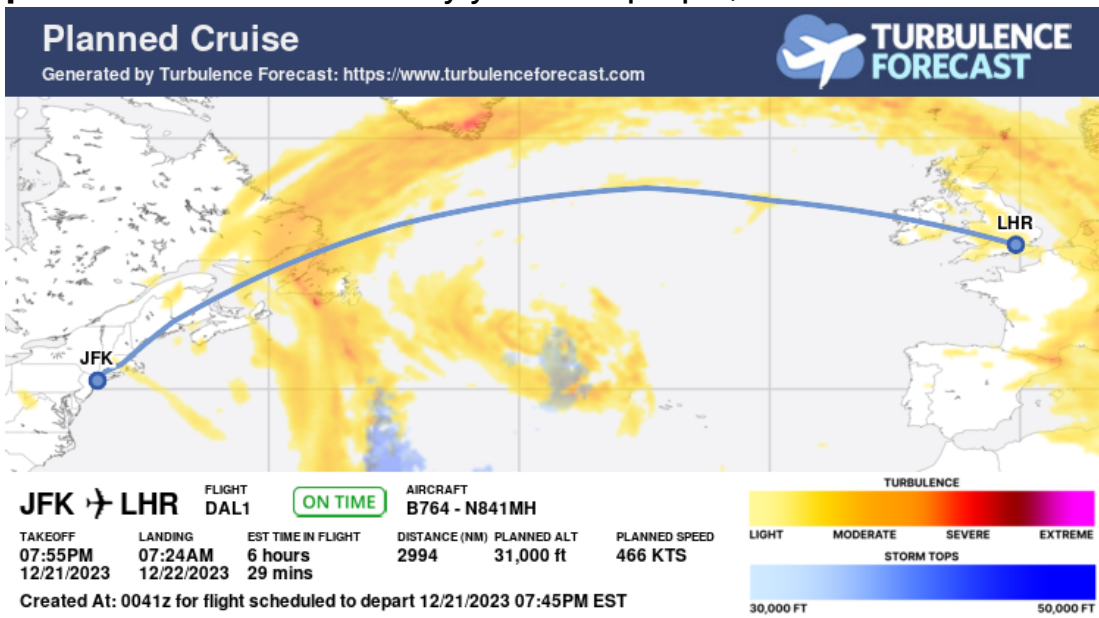


Cruise Maps: Turbulence indicated by yellow to purple, weather in blue.



Interpreting Your Forecast

Yellow, orange, and red regions signify light, moderate, and severe turbulence, respectively. Light blue areas represent lower weather which may be flown above, while dark blue indicates higher, potentially more severe weather. Expect light to moderate turbulence around weather. Keep in mind your pilot will use on-board radar to help see and avoid any severe storms on the course of your flight.

Turbulence intensity is likely to increase in areas where weather and turbulence predictions overlap.

The blue line represents your estimated flightpath. When possible we use your filed flight plan which is very similar to the route you will actually fly. If a flight plan isn't available, the path will represent the shortest distance between airports, and is an approximation of the actual flight path. Longer flights will tend to fly along the jet stream (potentially bumpy areas) when going east, and will try to avoid the jet stream when flying west. Other automated tools only calculate along the blue line, with ours, you can follow along with the in flight map and be will informed where bumps may potentially happen, regardless of flight path.

Cruise Altitudes

Forecasts are provided for three different cruising altitudes. If you have the ability to check your altitude in flight you can select the forecast closest to your altitude for best accuracy.

The first image most closely represents your expected cruising altitude. For short flights where there isn't enough time to climb to higher levels this may be your final cruise altitude. Very long flights may remain near 30,000ft for an hour or more.

The additional images reflect higher cruising altitudes which your pilot may change to in the event your initial cruise altitude is too bumpy or after some fuel has been burned off.

Departure Airport Forecast (JFK)

Forecast for John F Kennedy Intl Airport issued 12/21/2023 06:20PM EST

From 12/22/2023 01:00AM EST:

Wind: from the north (010 degrees) at 6 knots

Visibility: more than 6 statute miles

Sky conditions: broken clouds at 25000 feet

Destination Airport Forecast (LHR)

Forecast for London Heathrow Airport issued 12/21/2023 10:54PM GMT

Gradual change to the following between 12/22/2023 05:00AM GMT and 12/22/2023 08:00AM GMT:

Wind: from the west (280 degrees) at 16 knots gusting to 30 knots

We hope you have a safe and enjoyable flight!

The Turbulence Forecast Team

www.turbulenceforecast.com

Created 12-22-23 00:41z Ref#: 48881-129453

Disclaimer

ALWAYS WEAR YOUR SEAT BELT AND OBEY CREWMEMBER INSTRUCTIONS. UNFORECASTED TURBULENCE MAY OCCUR. PASSENGER USE ONLY, NOT FOR COMMERCIAL USE.